

The Robb Report COLLECTION™

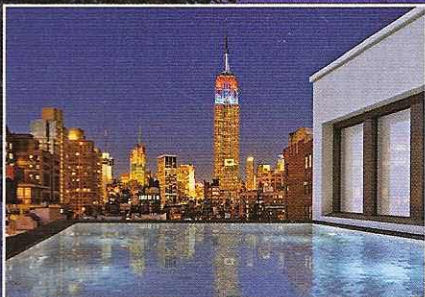
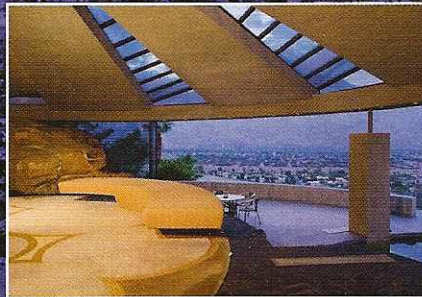
THE BUYER'S GUIDE FOR CONNOISSEURS

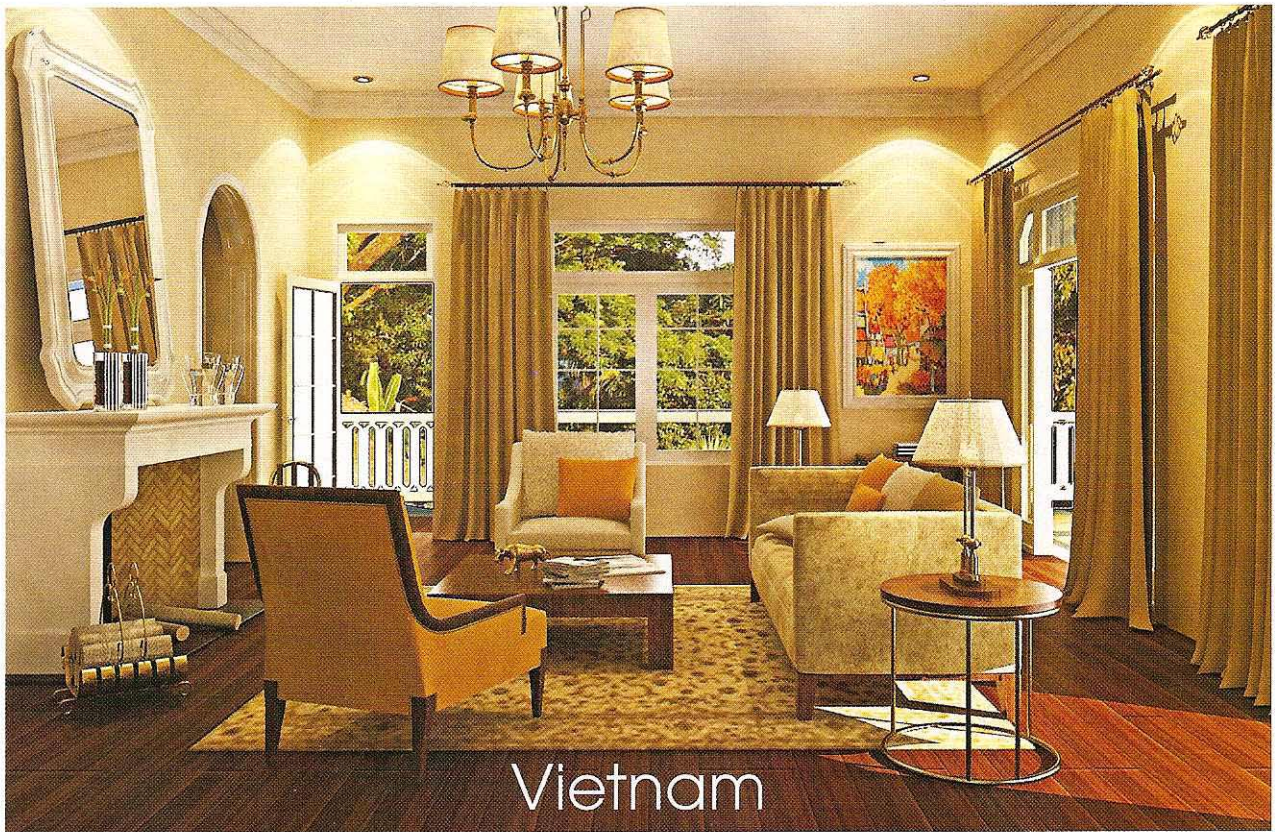
12 Winter Getaways

New resort
developments in
Deer Valley, Aspen,
Montreal, New York,
Mexico, Vietnam,
Mammoth & More

PLUS

John Lautner's
James Bond House
AUCTION REPORT:
Roadsters & Racecars
The Season's Best Furnishings,
Accessories & Custom Interiors





LOCATION: Five minutes from the center of Dalat—capital of the Lam Dong Province—on the Lang Bian Plateau in the south central highlands of Vietnam.

BACKGROUND: Established as a French resort town in the 1890s and dubbed the “City of Eternal Spring,” Dalat experiences comfortable weather year-round due to its position at nearly 5,000 feet above sea level. Dalat “is a relatively undiscovered gem that offers a respite from the heat of southeast Asia,” says Barry Israel, one of the financiers for La Vallée de Dalat, a hilltop development adjacent to former Emperor Bao Dai’s summer palace—a 25-room villa built in 1933. Dalat has been called “Le Petit Paris” because of its many French touches, including a small-scale replica of the Eiffel Tower that serves as a radio transmission tower. Drawing on the area’s early-20th-century French-style villas for inspiration, Khanh Tam Development and design firm Asiatique have begun work on La Vallée de Dalat, the city’s first gated housing compound.

STATS: Scheduled for occupancy in late 2009, La Vallée de

Dalat will consist of seven four-bedroom, 6,500-square-foot villas, each with a Jacuzzi, three fireplaces, and seven or eight bathrooms. Interiors will feature a neutral color palette, with teak or cherry wood flooring. Underground storage tanks will hold excess water for gardening, wastewater, and backup supply purposes. A family membership to the Dalat Palace Golf Club is included with ownership. In addition to golfing, the area is popular for mountain biking, hiking, and bird-watching.

WHAT SETS IT APART: “The houses are designed to take maximum advantage of the spectacular mountain and valley views,” says Israel. “They are built on a steep hillside that has been cut and filled with large retaining walls. The idea is that the houses are built on different elevations, so they have an isolated feeling looking out over the valleys.”

MARKET INQUIRIES: \$1.25 million to \$1.5 million. Lorya Nosedá, +84.8.824.6125, Thuy Trang, +84.8.824.6125, or U.S.-based Jan Vail, 805.455.4450

—HAYLEY LERCH

